

**Show Me Classic Parts  
Fairlady Z S30  
Catalog**

ダットサン  
フェアレディ**Z**

# INDEX

We are committed to your full satisfaction and strive to provide you with a easy and care free shopping experience. To find what you've been looking for use our catalog index.

[New Arrival](#)

[Page 3](#)

[S30 Model](#)

[Page 4](#)

# New Arrival

1973-1978 Datsun Late 240z  
260z 280z Door Hinge Repair  
Kit



1970-1972 Datsun Early 240z  
Door Hinge Repair Kit



1970-1978 Datsun 240z 260z  
280z Transmission Shifter  
Bushing Repair Kit (Stainless  
Steel)



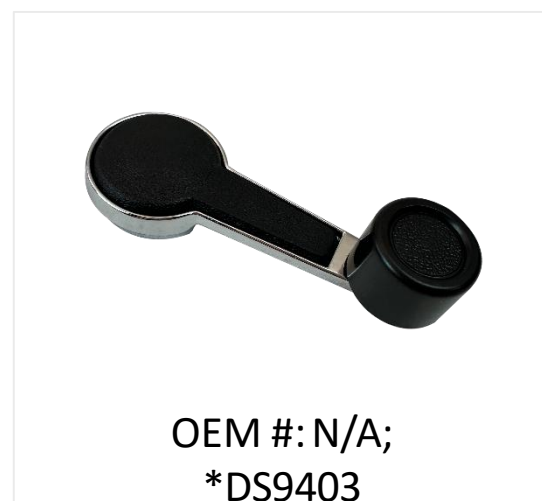
1970-1973 Datsun 240Z Head  
Lamp Bucket RH



1970-1973 Datsun 240Z Head  
Lamp Bucket LH



1970-1978 Datsun 240z 260z  
280z Window Crank Handle



1970-1978 Datsun 240z 260z  
280z Cowl Panel



1970-1973 Datsun 240z Hood  
Latch Lock Upper w/ Rubber  
Handle



1970-1973 Datsun 240z Hood  
Latch Lock Upper wo Rubber  
Handle



1970-1973 Datsun 240z Hood  
Latch Lower



# DATSUN S30 MODEL (240Z 260Z 280Z) 70-78

1970-1973 Datsun 240Z Front Bumper Chromed Without Rubber Holes



OEM #: 62650-E4102;  
\*DS5801

1970-1973 Datsun 240Z Front Bumper Chromed W/ Rubber Holes



OEM #: 62650-E4102;  
\*DS5804

1970-1973 Datsun 240Z Front Bumper Painted



OEM #: 62650-E4102;  
\*DS5802

1970-1973 Datsun 240Z Rear Bumper Chromed



OEM #: 85002-E4126;  
\*DS7901

1970-1973 Datsun 240Z Rear Bumper Painted



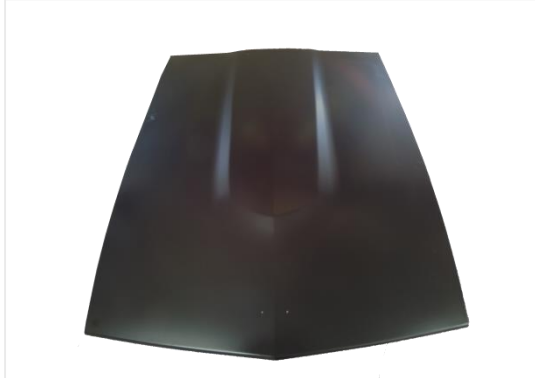
OEM #: 85002-E4126P;  
\*DS7902

1977-1978 Datsun 280Z Front Steel Hood w/ Louver Holes



OEM #: 65100-N4200;  
\*DS5301

1970-1976 Datsun 240Z 260Z Front Steel Hood w/o Louver Holes



OEM #: 65100-N4200;  
\*DS5302

1970-1973 Datsun 240z Front Grille



OEM #: 62300-E4601;  
\*DS5501

1970-1973 Datsun 240z Front Door Shell Complete RH



OEM #: 80100-E4100;  
\*DS6701

1970-1973 Datsun 240z Front Door Shell Complete LH



OEM #: 80101-E4100;  
\*DS6702

# DATSUN S30 MODEL (240Z 260Z 280Z) 70-78

1970-1976 Datsun 240z 260z  
Front Door Skin RH



1970-1976 Datsun 240z 260z  
Front Door Skin LH



1970-1978 Datsun 240Z 260Z  
280Z Belt Moulding Chrome  
Door Trim Set



1970-1978 Datsun 240Z 260Z  
280Z Front Fender RH



1970-1978 Datsun 240Z 260Z  
280Z Front Fender LH



1970-1972 Datsun 240z Front  
Steel Lower Valance Center



1970-1972 Datsun 240z Front  
Steel Lower Valance RH



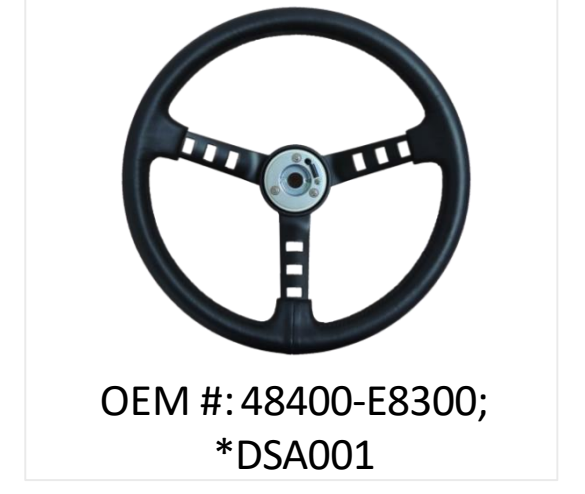
1970-1972 Datsun 240z Front  
Steel Lower Valance LH



1970-1978 Datsun 240Z 260Z  
280Z horn Pad w/ Z Mark



1970-1978 Datsun 240Z 260Z  
280Z Competition Steering  
Wheel



# DATSUN S30 MODEL (240Z 260Z 280Z) 70-78

1970-1972 Datsun 240z Rear  
Wheel Housing Pad



1970-1978 Datsun 240Z 260Z  
280Z Front Lower Control Arm  
RH



1970-1978 Datsun 240Z 260Z  
280Z Front Lower Control Arm  
LH



1970-1978 Datsun 240Z 260Z  
280Z Rear Lower Control Arm  
RH



1972-1978 Datsun 240Z 260Z  
280Z Rear Lower Control Arm  
LH



1970-1978 Datsun 240Z 260Z  
280Z Rear Lower Control Arm  
Bushing Front Side



1970-1978 Datsun 240Z 260Z  
280Z Rear Lower Control Arm  
Bushing Rear Side



1970-1978 Datsun 240z 260z  
280z Rear Spindle Pin



1970-1978 Datsun 240Z 260Z  
280Z Rear Spindle Lock Bolt



1970-1978 Datsun 240Z 260Z  
280Z Inner Tie Rod End Right



# DATSUN S30 MODEL (240Z 260Z 280Z) 70-78

1970-1978 Datsun 240Z 260Z  
280Z Front Rear Strut Mount  
RH=LH



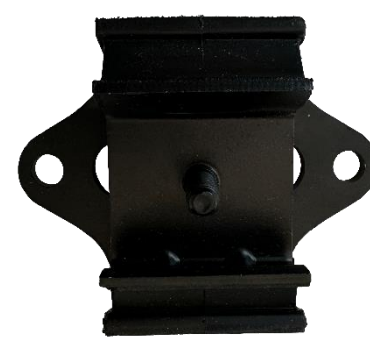
OEM #: 54320-E4100;  
\*DS7401

1971-1978 Datsun 240Z 260Z  
280Z Differential Mount



OEM #: 55415-N4301;  
\*DS8310

1972-1978 Datsun 240Z 260Z  
280Z Transmission Mount



OEM #: 11320-N3000;  
\*DS8300

1970-1972 Datsun 240Z Tail  
Light Panel



OEM #: 79901-E4100;  
\*DSTP02

1970-1972 Datsun 240Z  
Taillight Assembly w/ Amber  
Signal Light



OEM #: 26550-E4600A;  
\*DS8601

1970-1972 Datsun 240Z  
Taillight Assembly w/ Red  
Signal Light



OEM #: 26550-E4600R;  
\*DS8602

1970-1972 Datsun 240z Turn  
Signal Lamp Set with Amber  
Lens



OEM #: 26120-E4100;  
\*DS8603

1970-1972 Datsun 240z Turn  
Signal Lamp Set with  
White Lens



OEM #: 26120-E4100;  
\*DS8604

1970-1978 Datsun 240Z 260Z  
280Z Rear Hatch Upper Panel



OEM #: N/A;  
\*DS8103

1970-1972 Datsun 240Z Rear  
Panel (Curve)



OEM #: 79100-E4650;  
\*DS8104

# DATSUN S30 MODEL (240Z 260Z 280Z) 70-78

1970-1972 Datsun 240z Tail  
light Panel Assembly



OEM #: NA;  
\*DS8105

1977-1978 Datsun 280z Tail  
light Panel Assembly



OEM #: NA;  
\*DS8106

1970-1978 Datsun 240z 260z  
280z Tailgate Panel



OEM #: 90101-N4500;  
\*DS8107

1970-1972 Datsun 240z Air  
Intake Induction Duct Set



OEM #: 62590-E4100; 62591-  
E4101; \*DS9901; \*DS9902

1972-1978 Datsun 240Z 260Z  
280Z Radiator Cooling Fan  
Blade



OEM #: 21060-N3600;  
\*DS7201

1970-1978 Datsun 240z 260z  
280z Windshield Bottle  
Washer Assembly



OEM #: 27470-N4600;  
\*DS7301

1970-1972 Datsun 240Z Front  
Bumper Bracket RH=LH



OEM #: 62652-N3300;  
\*DS6100

1970-1978 Datsun 240Z 260Z  
280Z Front Windshield Corner  
Trim RH=LH



OEM #: 72815-E4100;  
\*DS8001

1970-1978 Datsun 240Z 260Z  
280Z Rear Tailgate / Hatch  
Corner Trim RH=LH



OEM #: 90955-E4100;  
\*DS8002

1970-1978 Datsun 240Z 260Z  
280Z Front Windshield / Rear  
Hatch Center Trim



OEM #: 72816-78500;  
\*DS8003



# DATSUN S30 MODEL (240Z 260Z 280Z) 70-78

1970-1972 Datsun 240Z  
Window Regulator RH



1970-1972 Datsun 240Z  
Window Regulator LH



1970-1972 Datsun 240Z  
Window Regulator Roll Repair  
Kit



1970-1978 Datsun 240Z 260Z  
280Z Rear Upgraded CV Axle  
RH=LH



Stay in touch with us!

Email : [info@showmeclassicparts.com](mailto:info@showmeclassicparts.com)